

Covid-19 Waste Sector Survey: W/C 26 April 2021

The Covid-19 Waste Sector Survey was commissioned to understand the ongoing impacts of Coronavirus on the waste sector and where challenges may exist.

Please note that respondents to the surveys are from a self-selecting sample and represent best reasonable estimates at the date and time the survey was completed. Questions ask respondents to consider the same equivalent period a year previously and therefore trends in the data reflect that comparison, not a comparison with previous surveys. The number of respondents to each survey is variable and results are therefore influenced by the proportion of respondents to each survey. For example, fewer respondents to a question will give greater prominence to individual responses. Direct comparisons between surveys is therefore not necessarily representative of the waste sector and only reflects those who have responded to each survey. Results are also dependent on respondents' interpretation of the question. It is inevitable that there will be variability within the data as a result of this. Therefore, interpreting the data is not an absolute science and analysis of the data should be used to support wider intelligence and understanding of the waste sector in response to Covid-19, opposed to being used as a definitive representation of the industry at this time.

Questions 6.1, 7.1, and 8.1 were added to the survey from the week commencing 30 November. Results for these questions are therefore not available for the week commencing 16 November.

This document is not in itself an official statistics release. The results within this document have not undergone any statistical analysis or manipulation and are a direct representation of the results provided through the survey.

Percentages throughout this document relate only to the proportion of those who answered the question and therefore should not be interpreted as a representative proportion of the entire waste sector. Additionally, percentages may not sum to totals due to rounding.

Number of Respondents:

Week Commencing 16 November 2020: 139

Week Commencing 30 November 2020: 69

Week Commencing 4 January 2021: 47

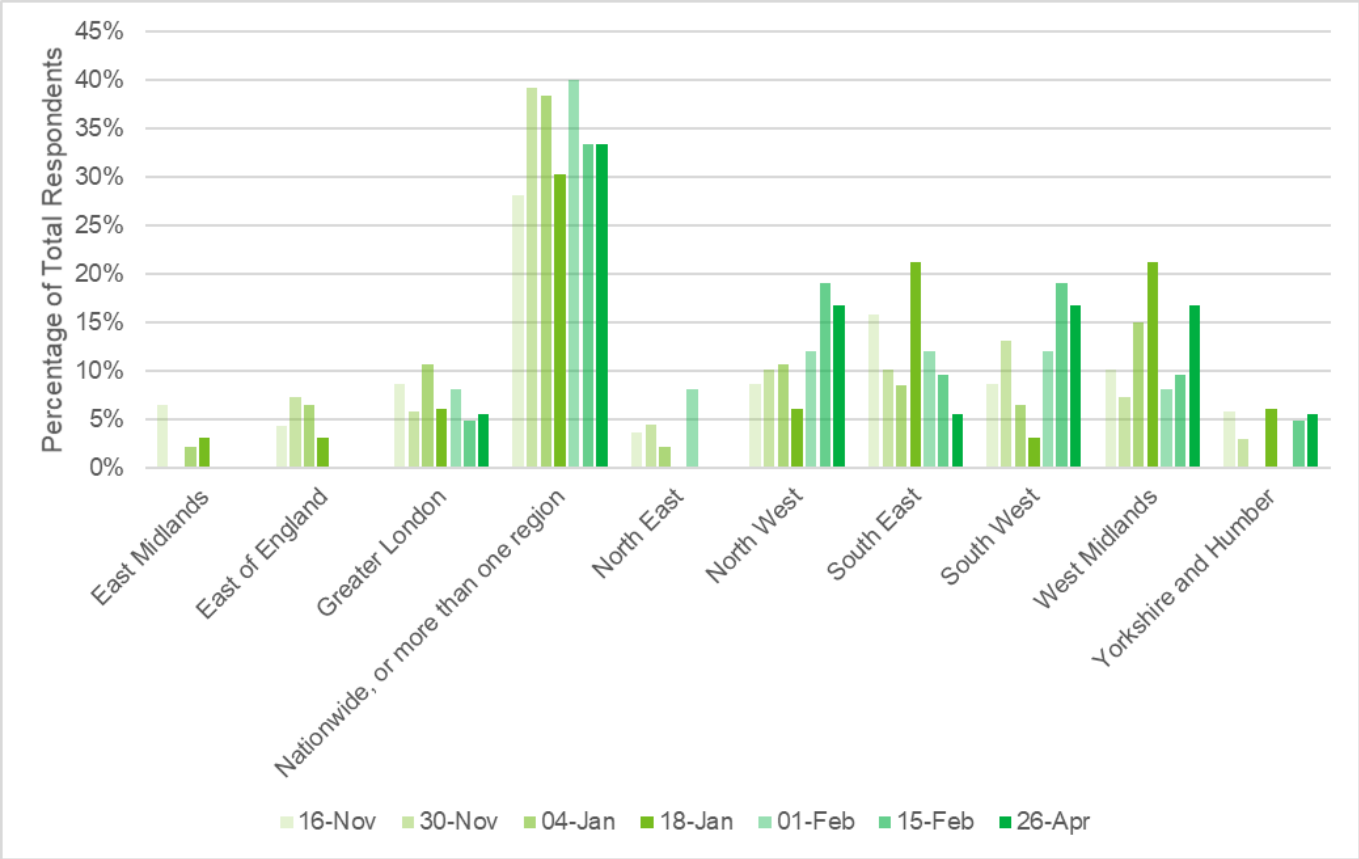
Week Commencing 18 January 2021: 33

Week Commencing 01 February 2021: 25

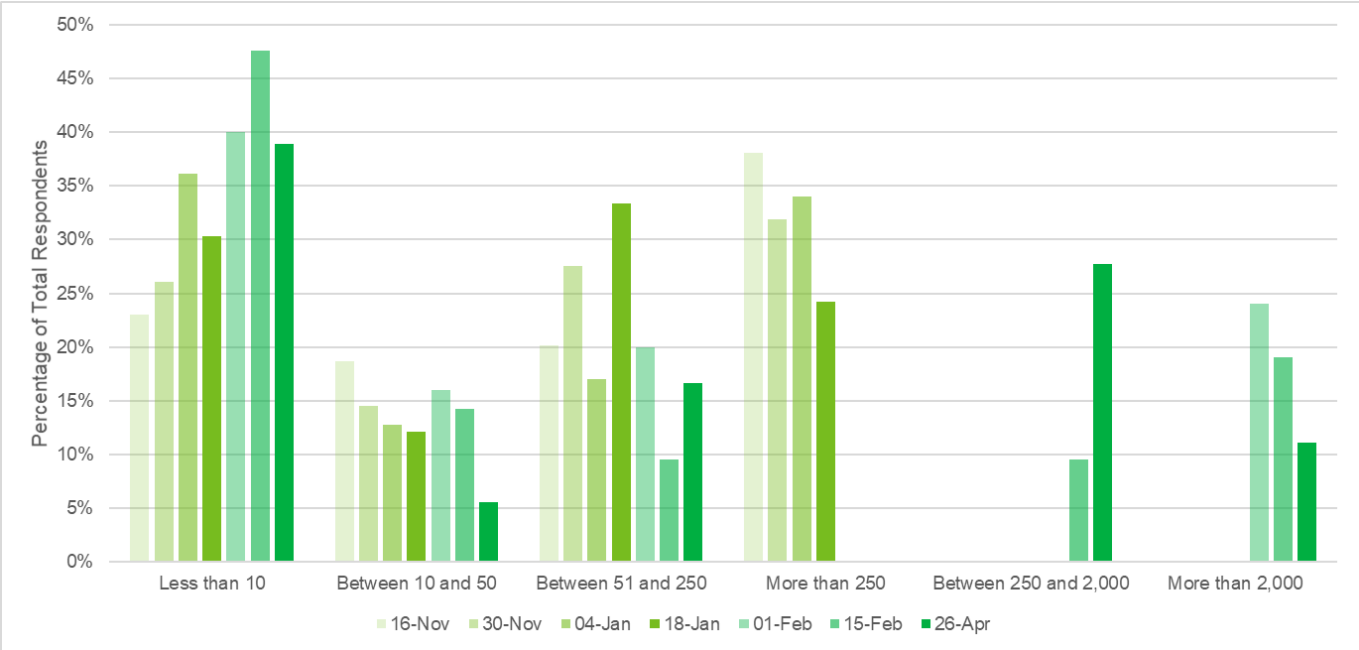
Week Commencing 15 February 2021: 21

Week Commencing 26 April: 18

1 In which region of England is your business focused?

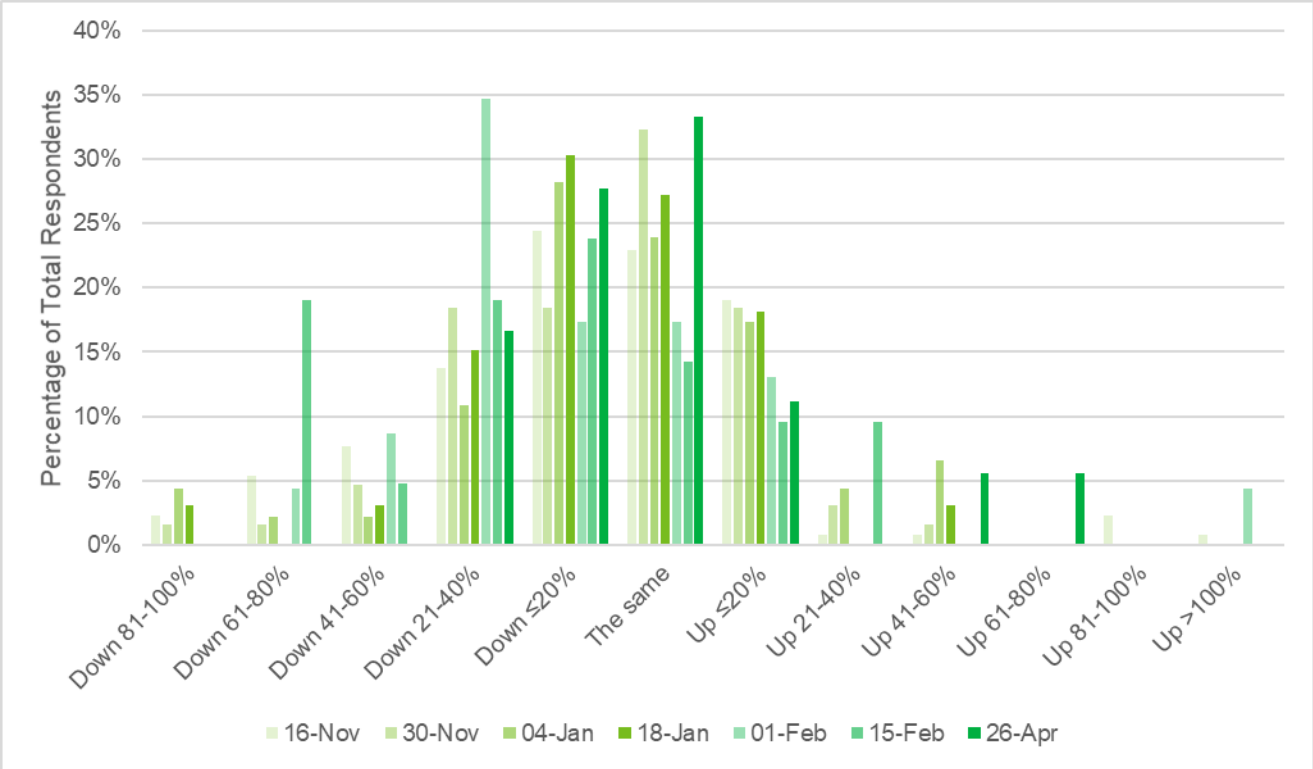


2 How many people work for your business?

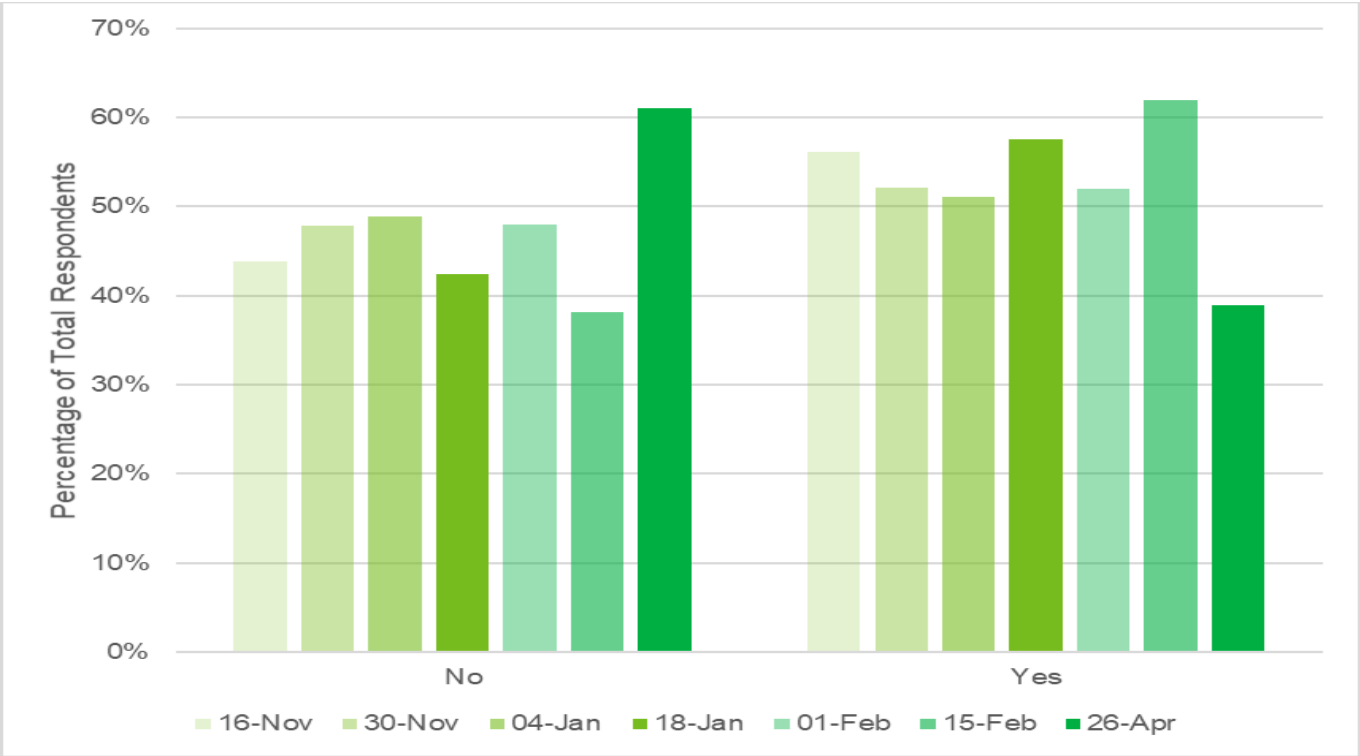


* The options “between 250 and 2,000” and “More than 2,000” were added from the week commencing 01 Feb 2021

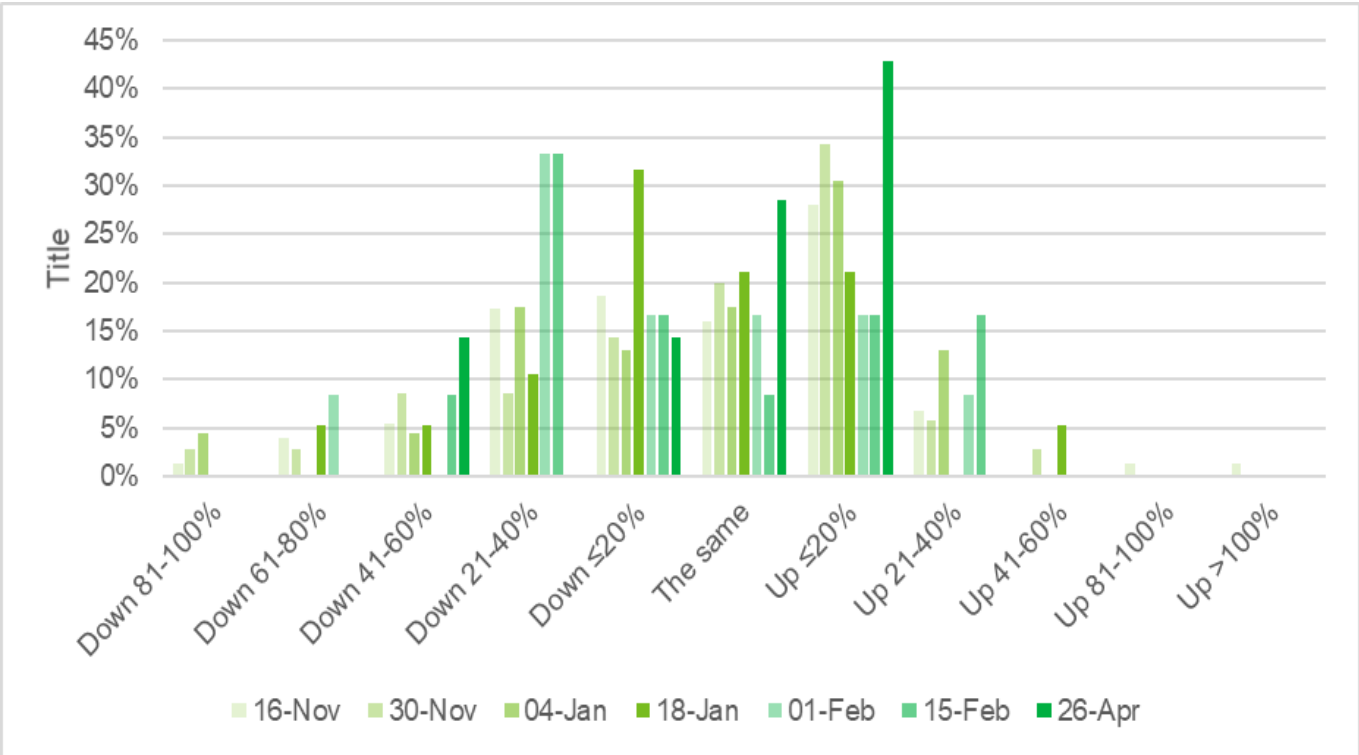
3 Compared to this equivalent period in 2019, is your level of business



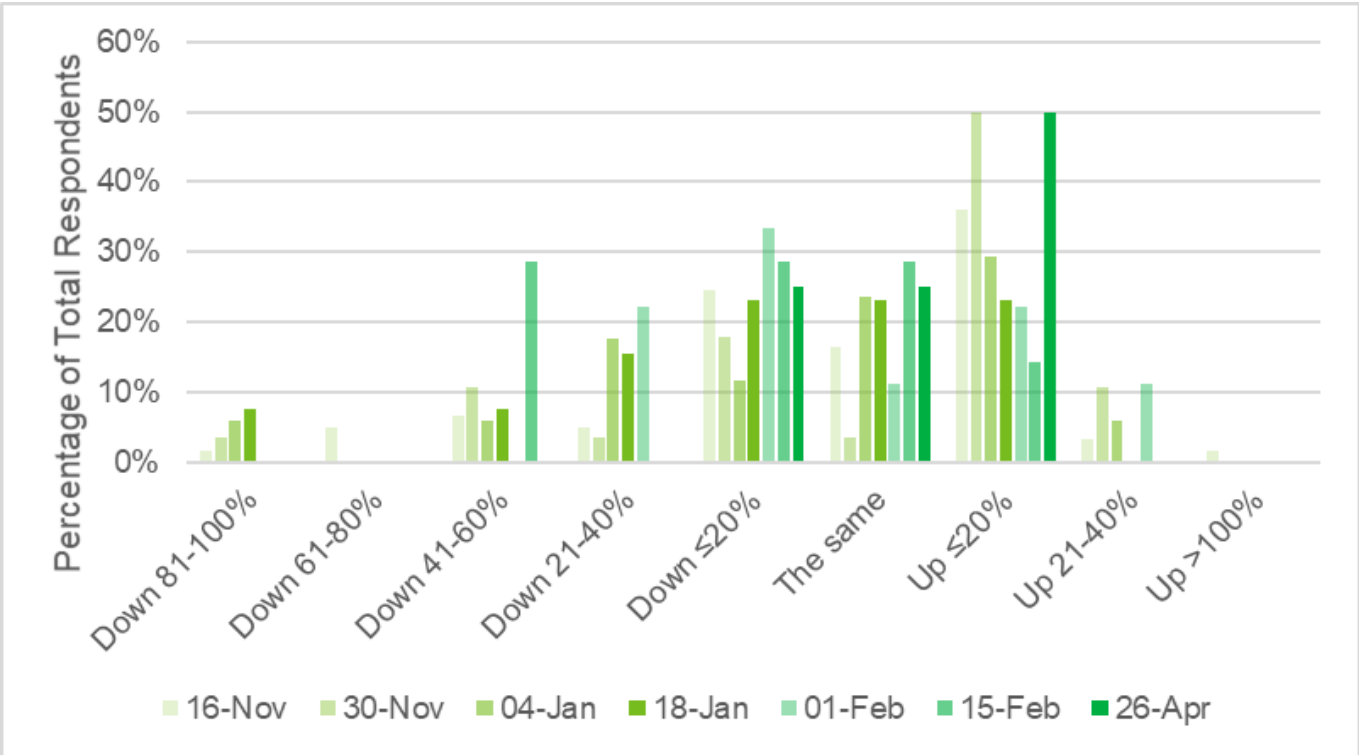
4 Does your business collect waste?



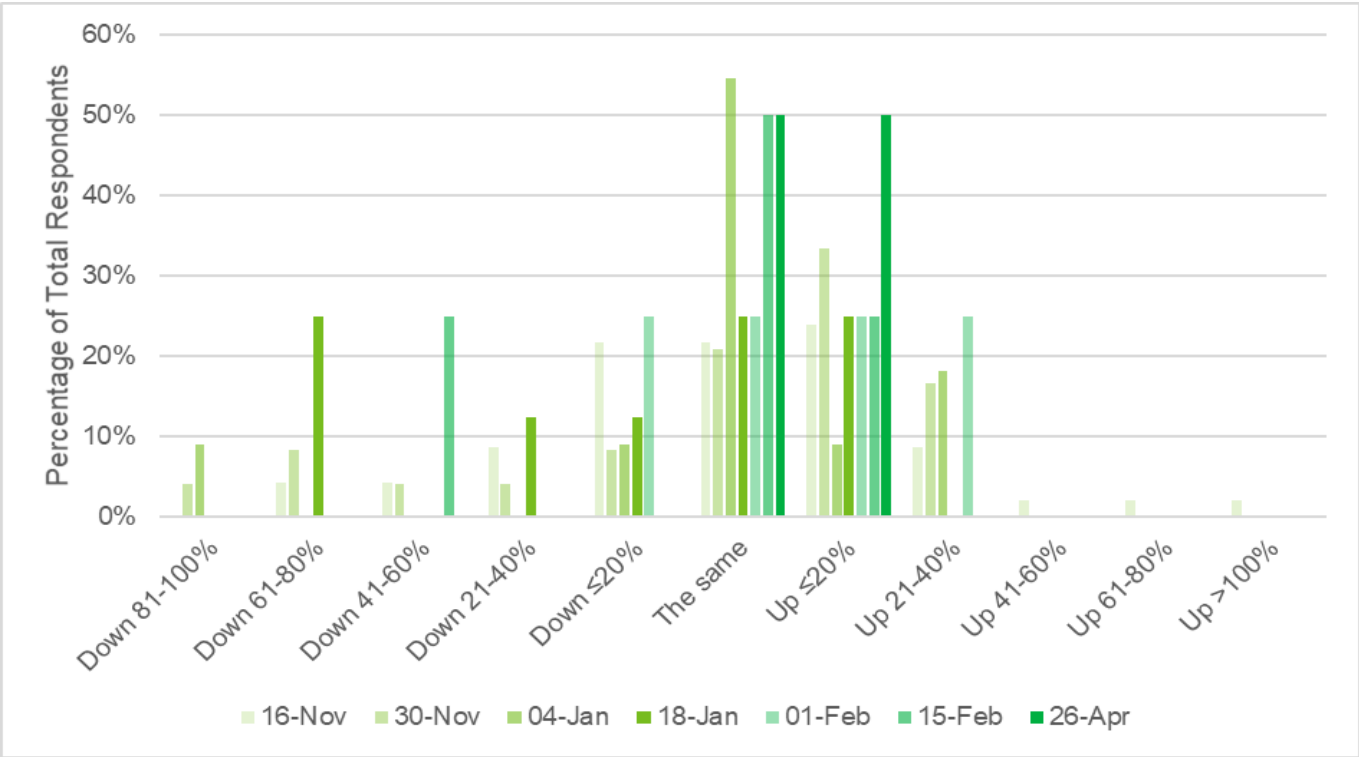
4.1 Compared to this equivalent period in 2019 is the total level of waste you are collecting:



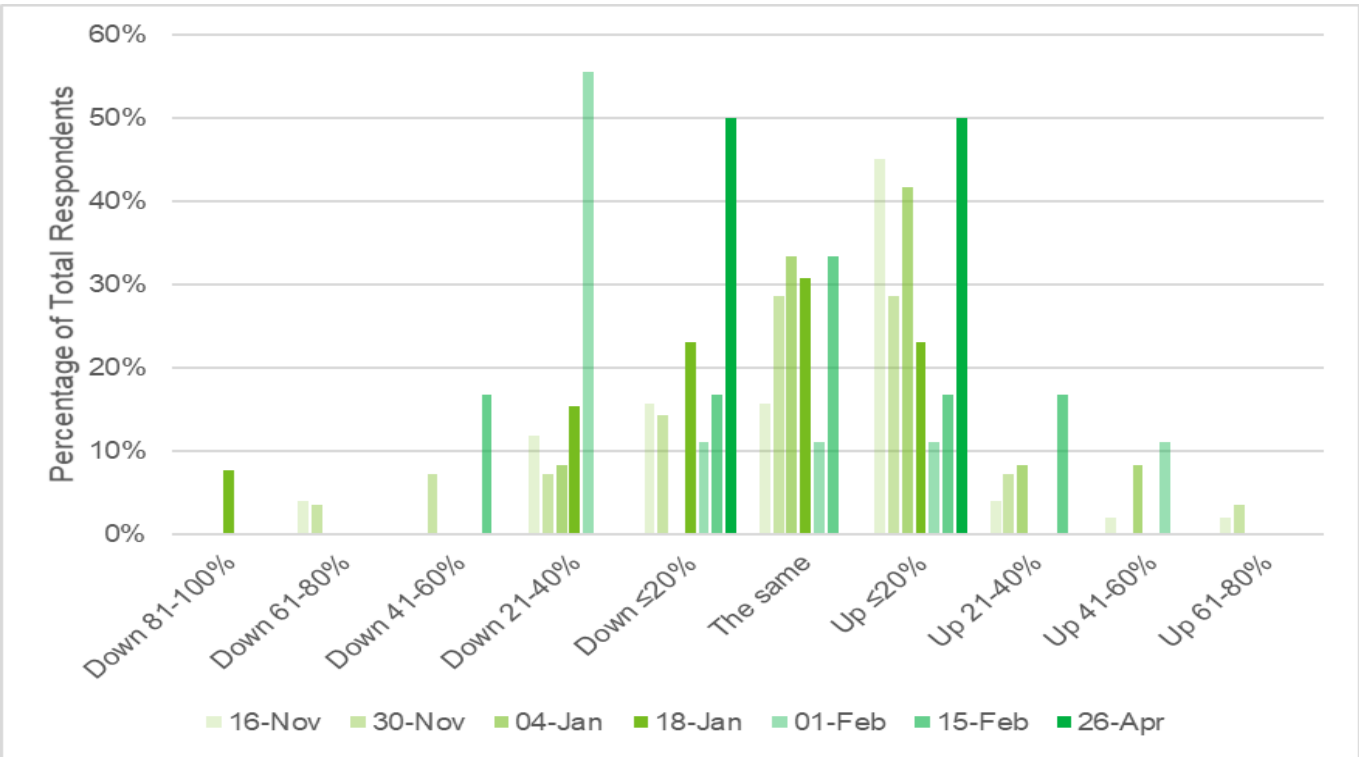
4.2 Compared to this equivalent period in 2019 is the level of dry recyclable material you are collecting:



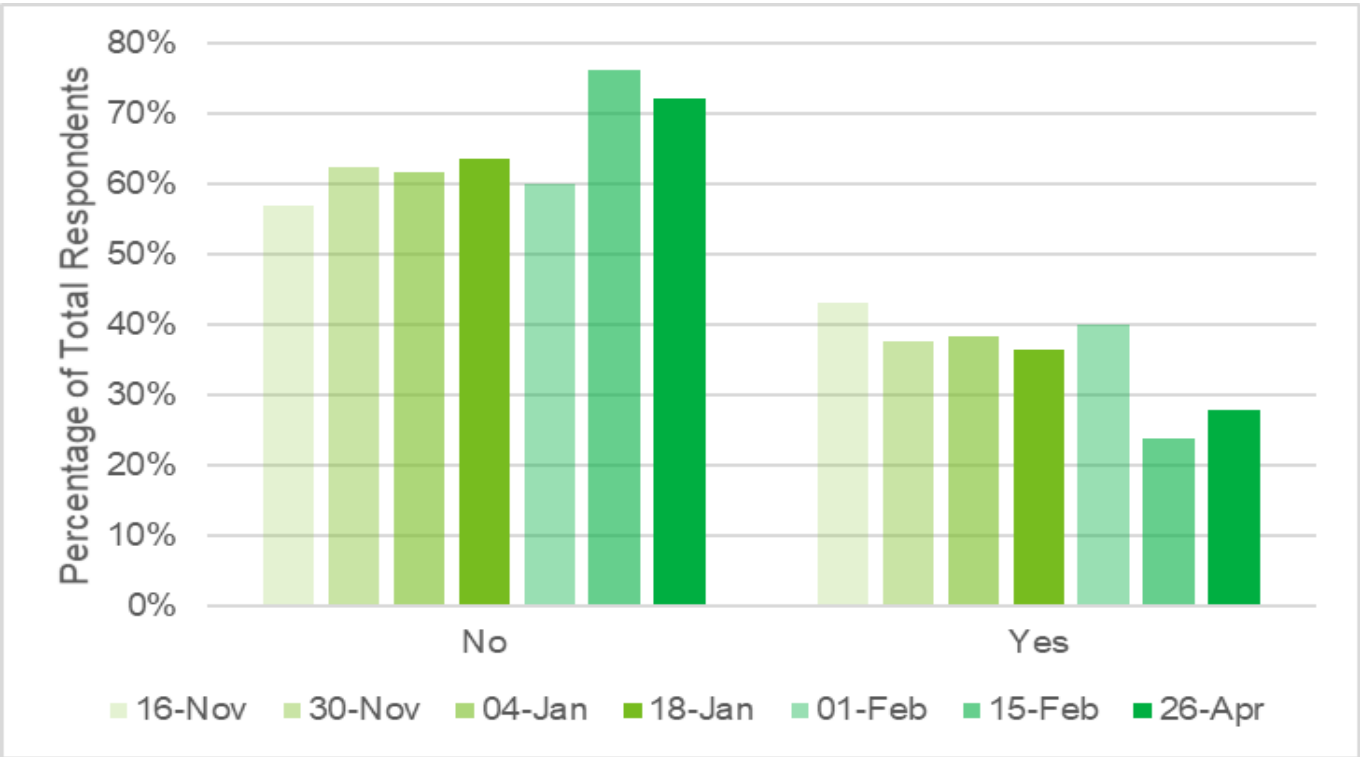
4.3 Compared to this equivalent period in 2019 is the level of organic/compostable (including food) waste you are collecting:



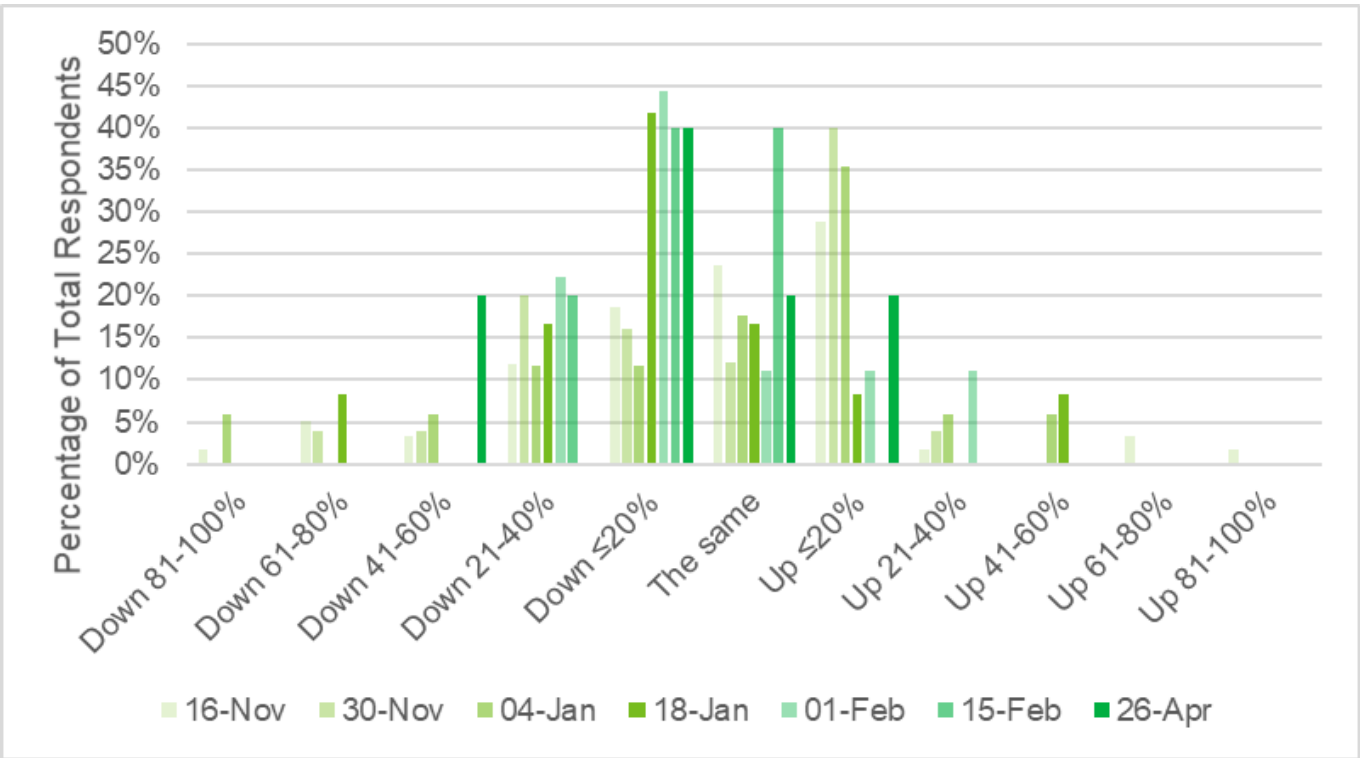
4.4 Compared to this equivalent period in 2019 is the level of residual waste you are collecting:



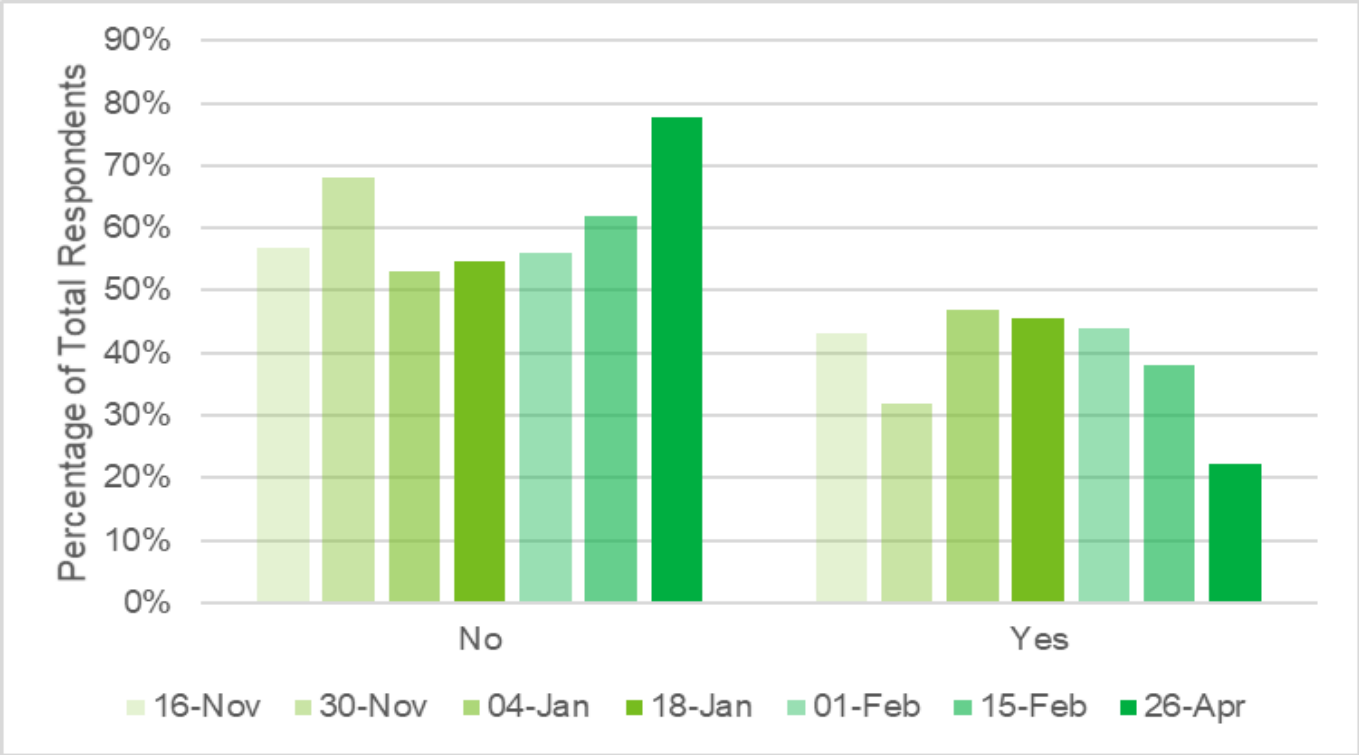
5 Does your business sort, or transfer waste, for example, MRFs, HWRCs, Transfer Stations?



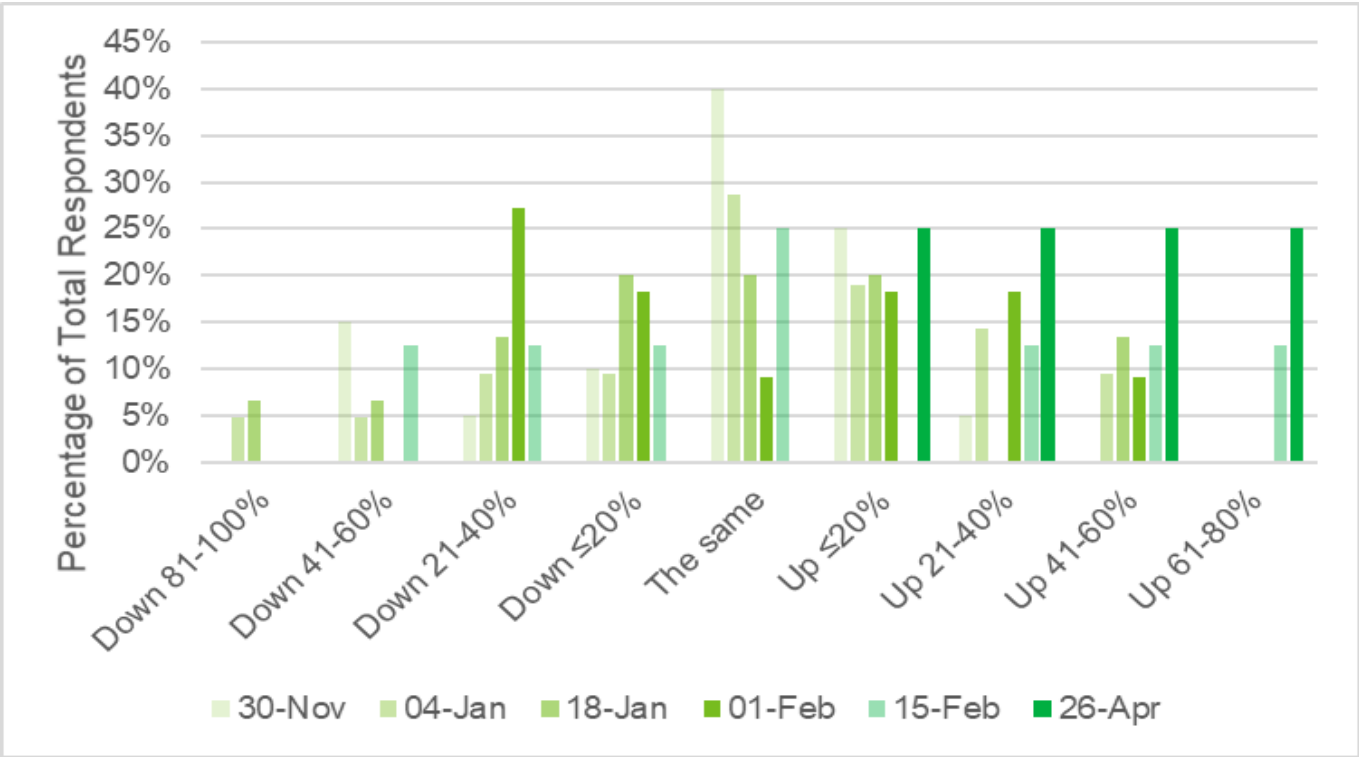
5.1 Compared to this equivalent period in 2019 is the level of waste you are sorting, or transferring



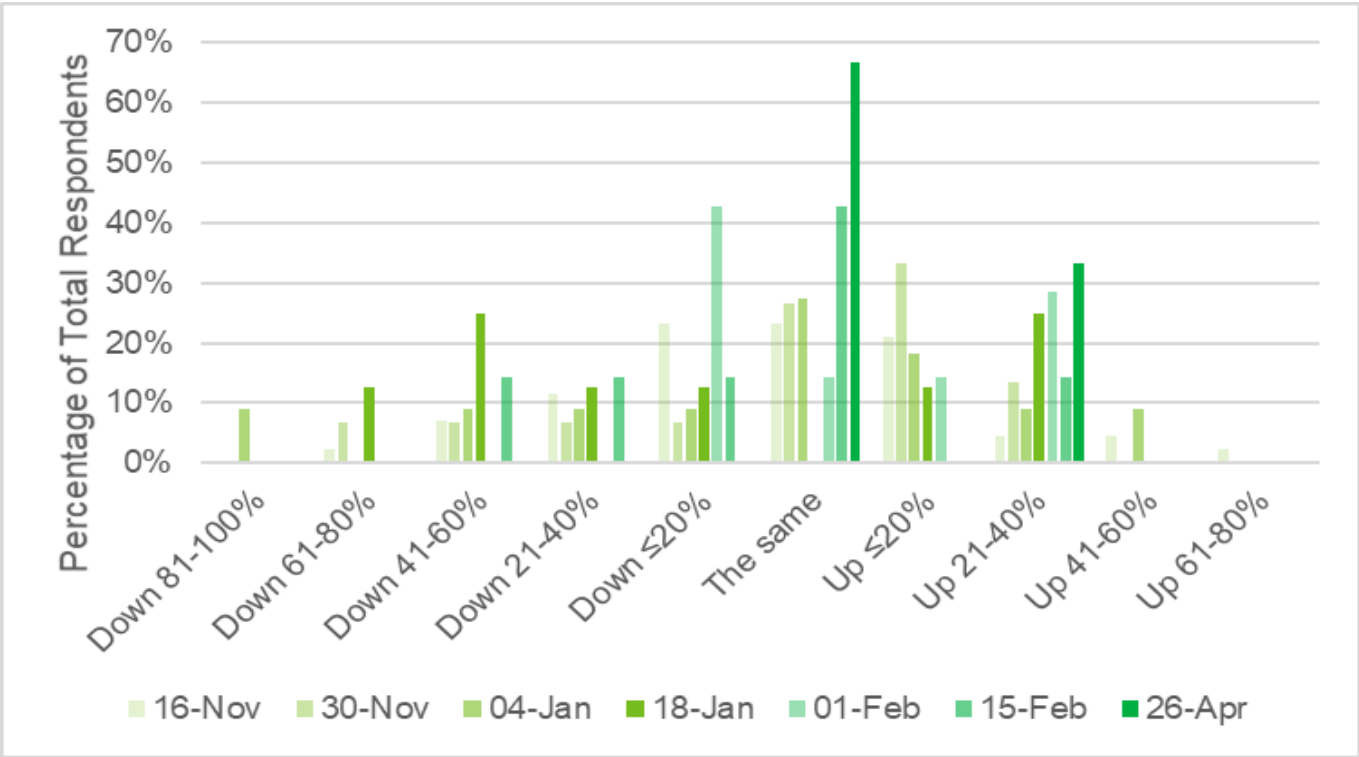
6 Does your business recycle or reprocess waste?



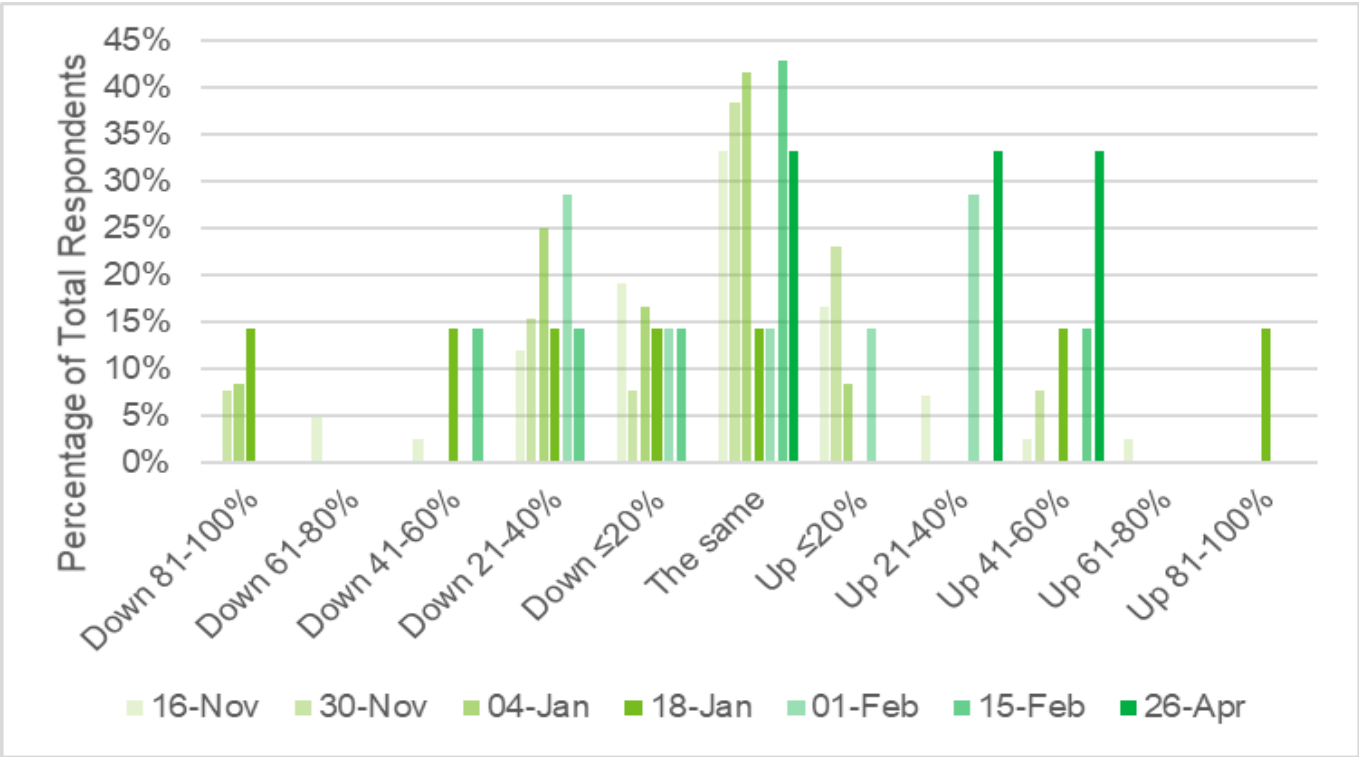
6.1 Compared to this equivalent period in 2019 is the total level of material you are recycling or reprocessing



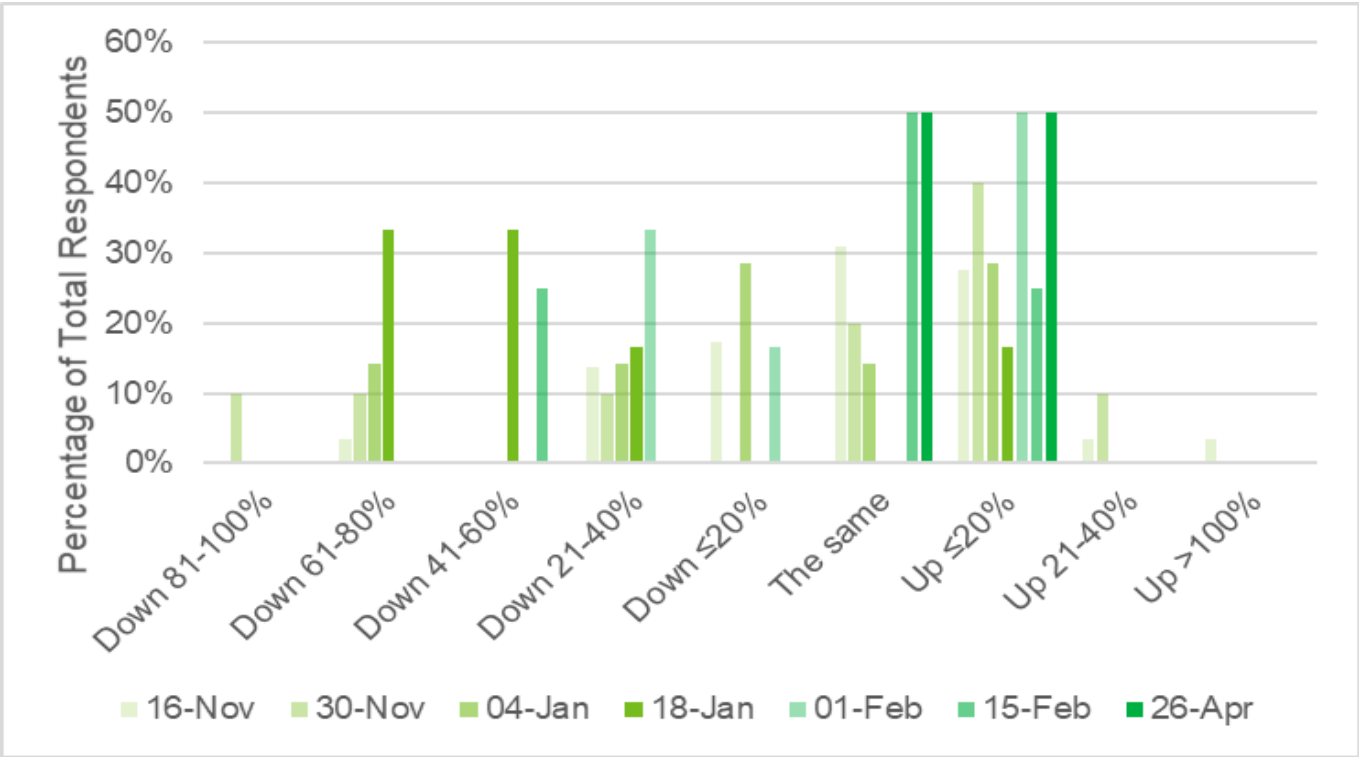
6.2 Compared to this equivalent period in 2019 how much paper and cardboard are you recycling or reprocessing?



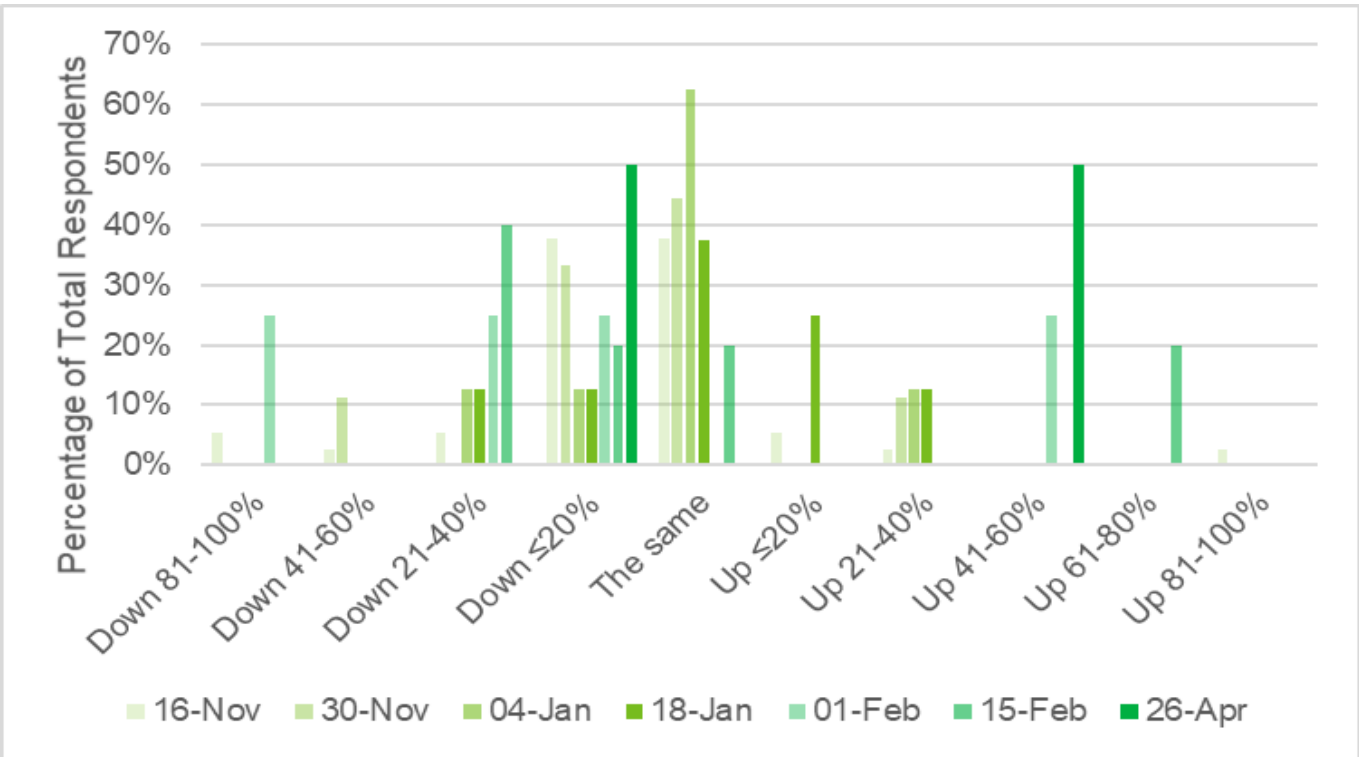
6.3 Compared to this equivalent period in 2019 how much plastic are you recycling or reprocessing?



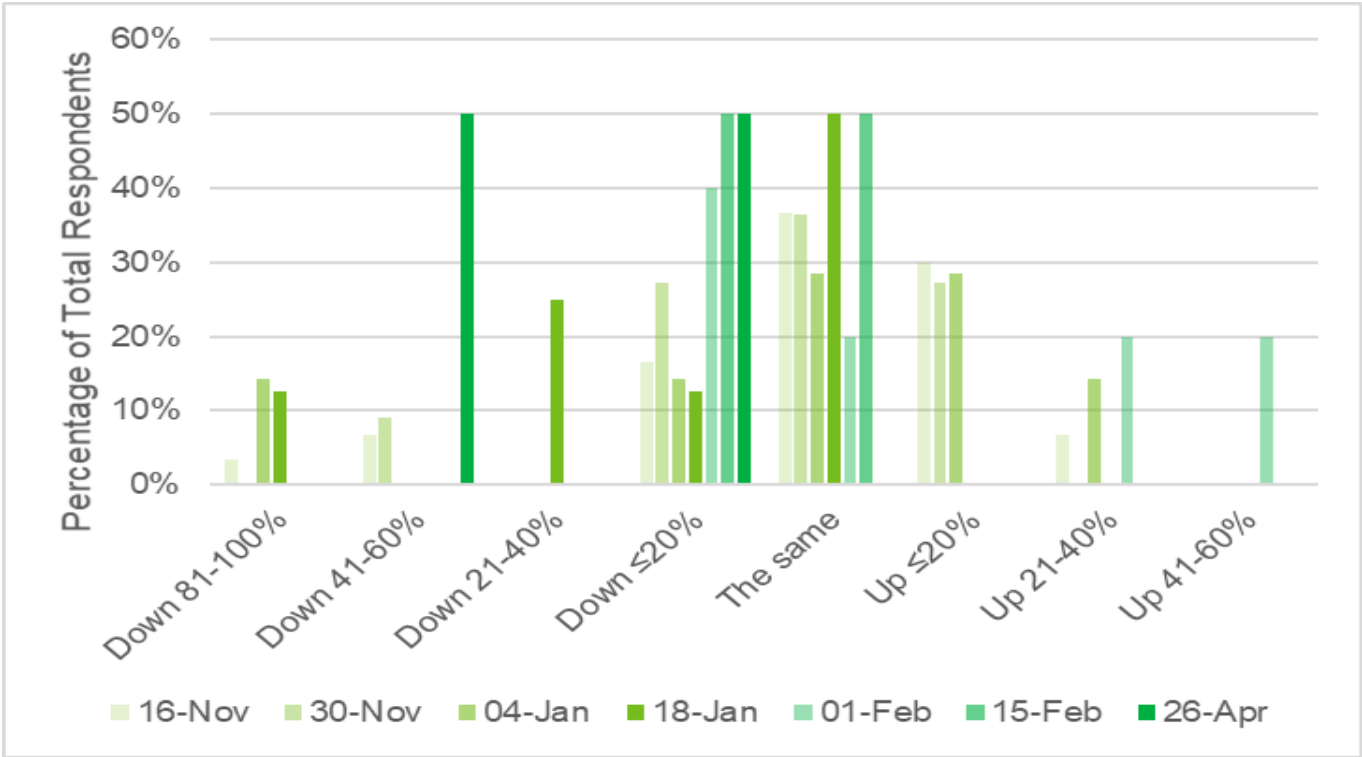
6.4 Compared to this equivalent period in 2019 how much glass are you recycling or reprocessing?



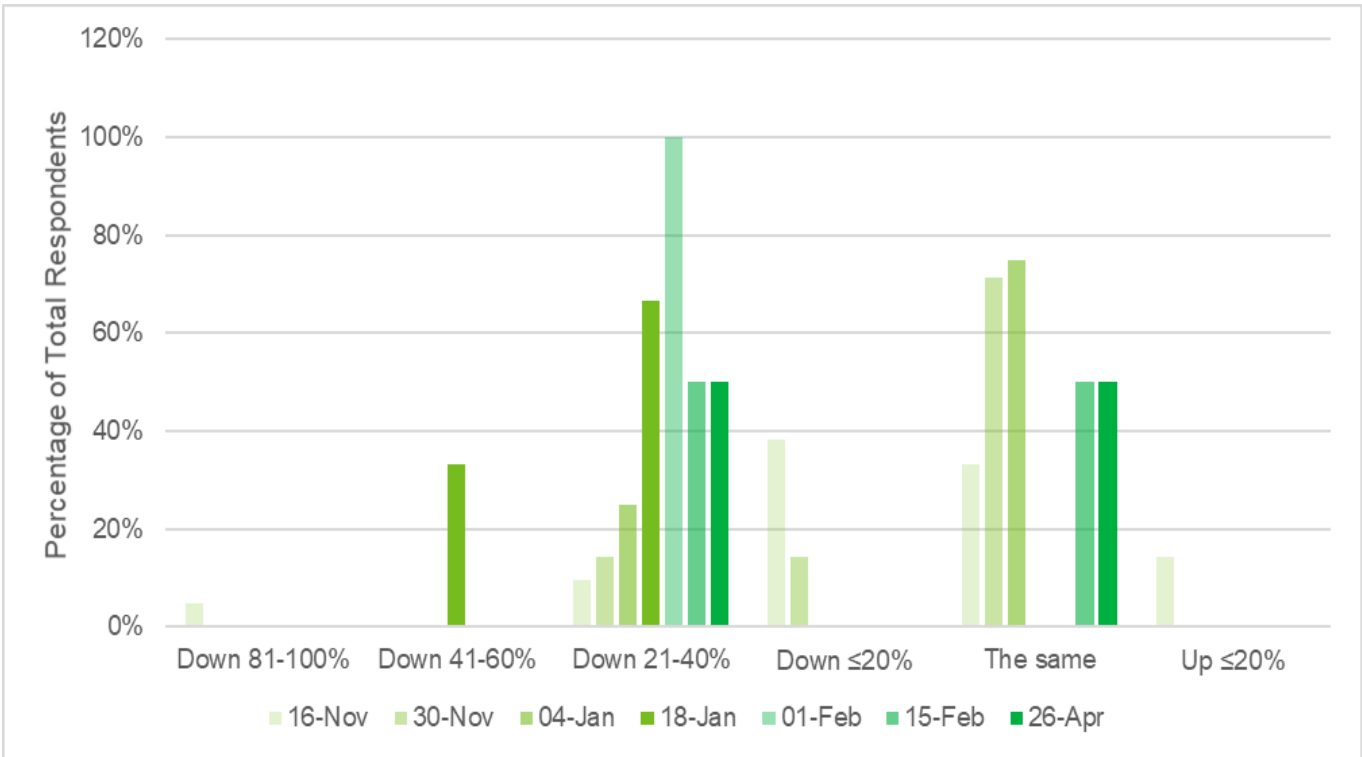
6.5 Compared to this equivalent period in 2019 how much WEEE are you recycling or reprocessing?



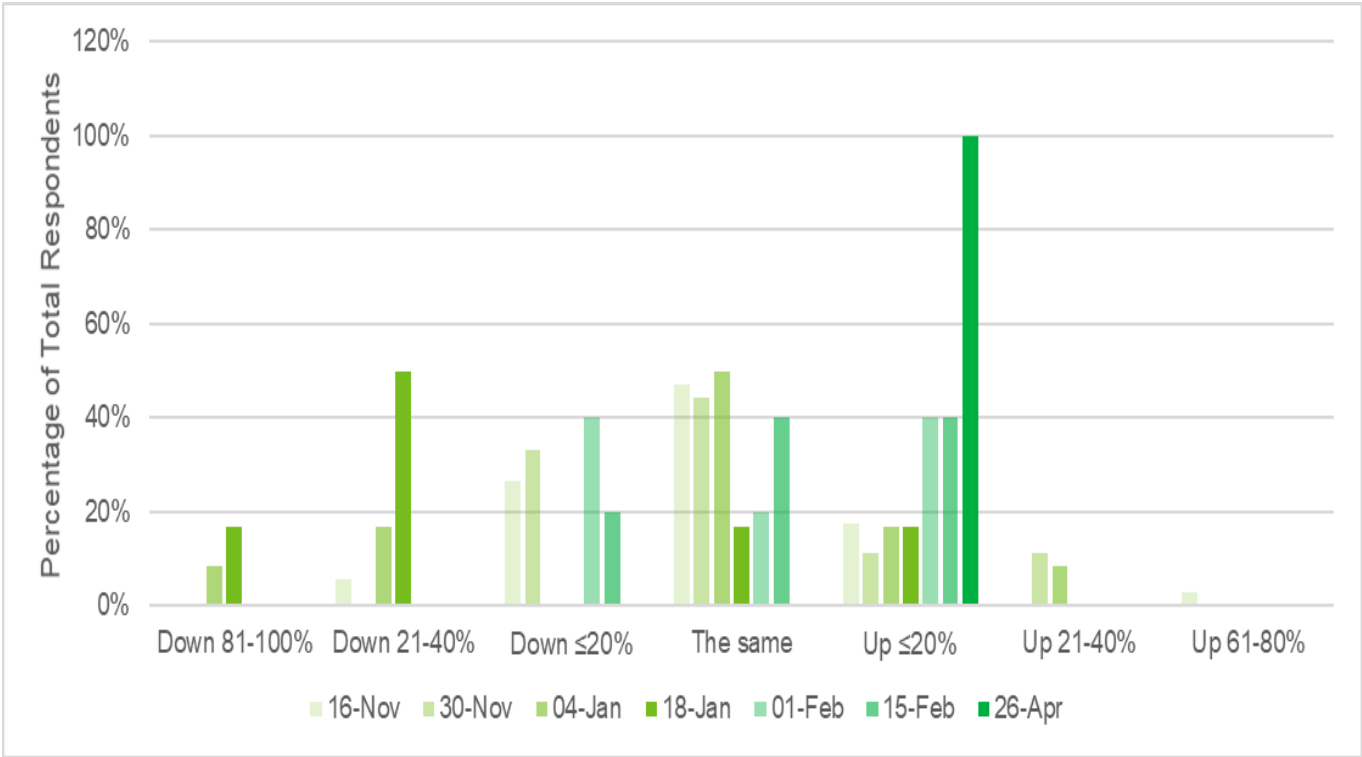
6.6 Compared to this equivalent period in 2019 how much bulky waste (including mattresses) are you recycling or reprocessing?



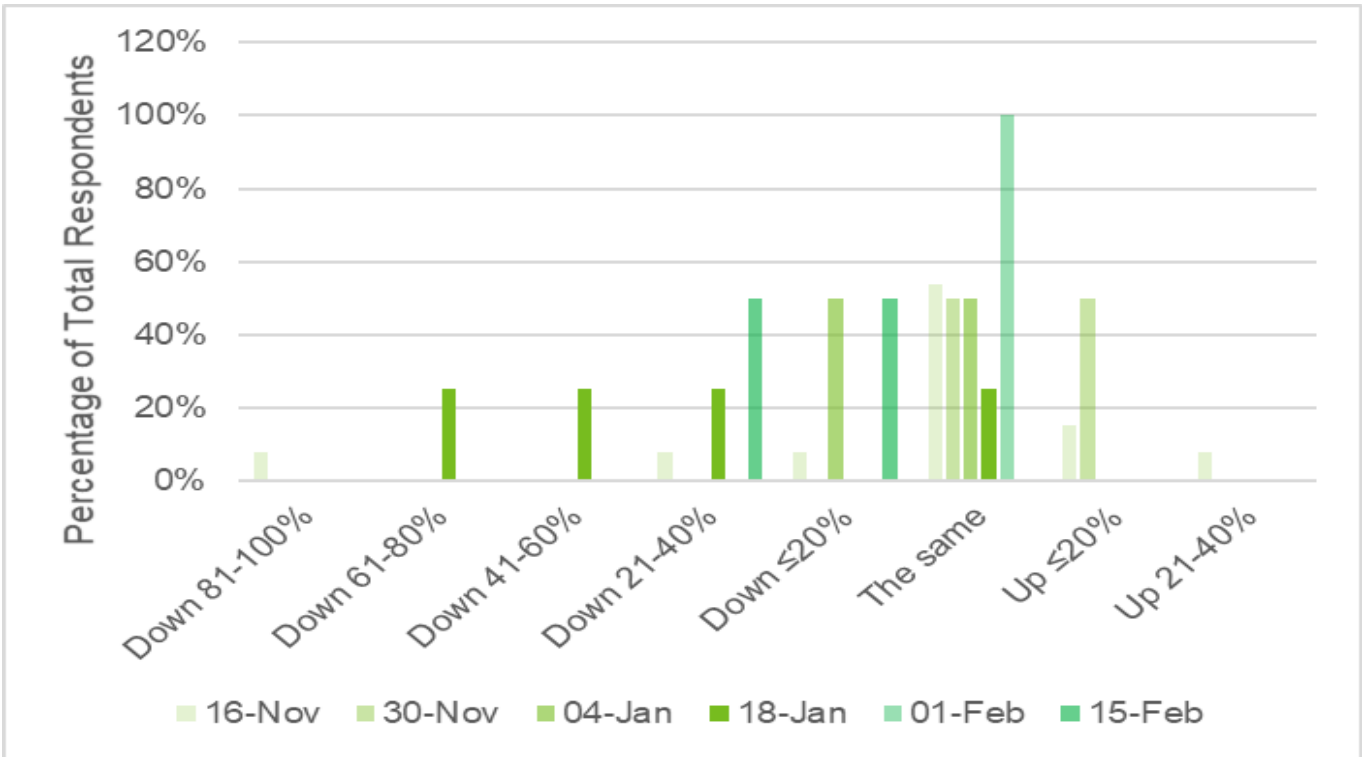
6.7 Compared to this equivalent period in 2019 how much textiles are you recycling or reprocessing?



6.8 Compared to this equivalent period in 2019 how much wood are you recycling or reprocessing?

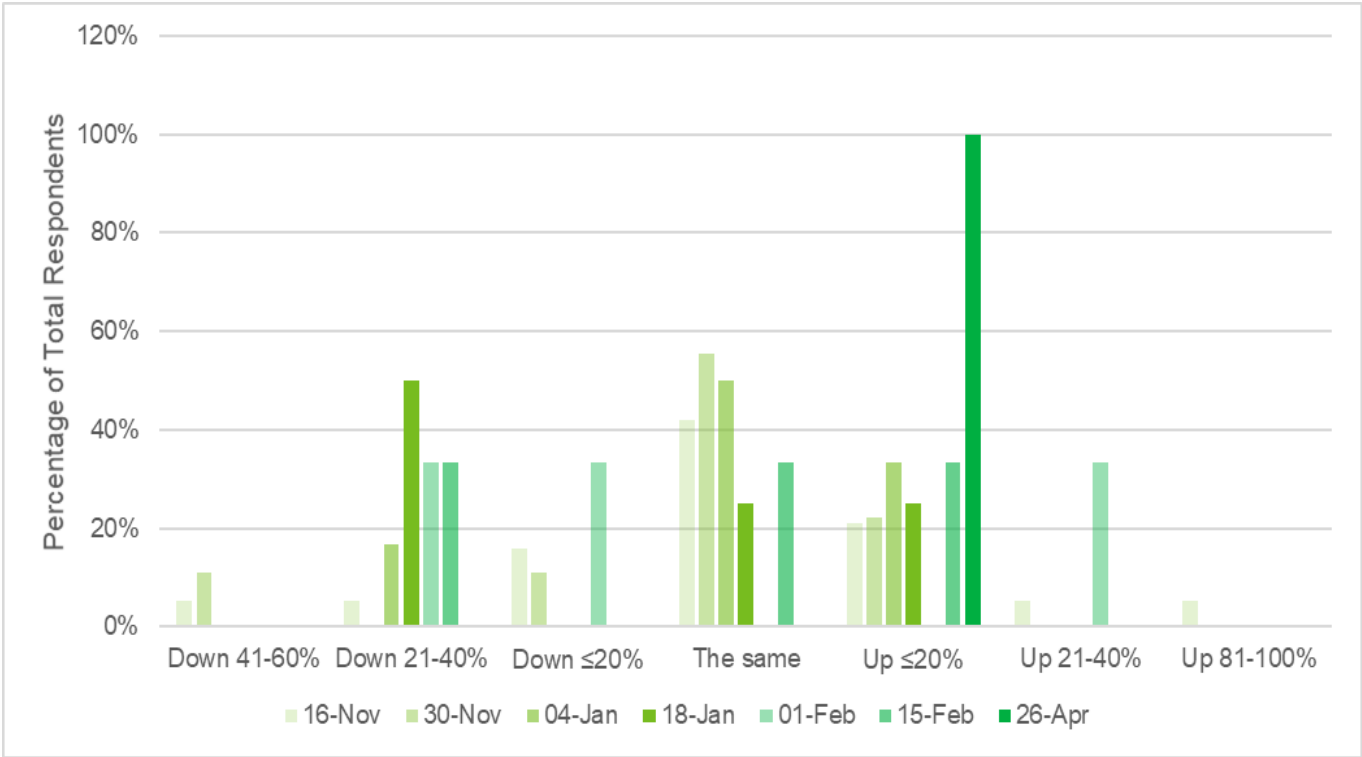


6.9 Compared to this equivalent period in 2019 how much waste are you processing through anaerobic digestion?

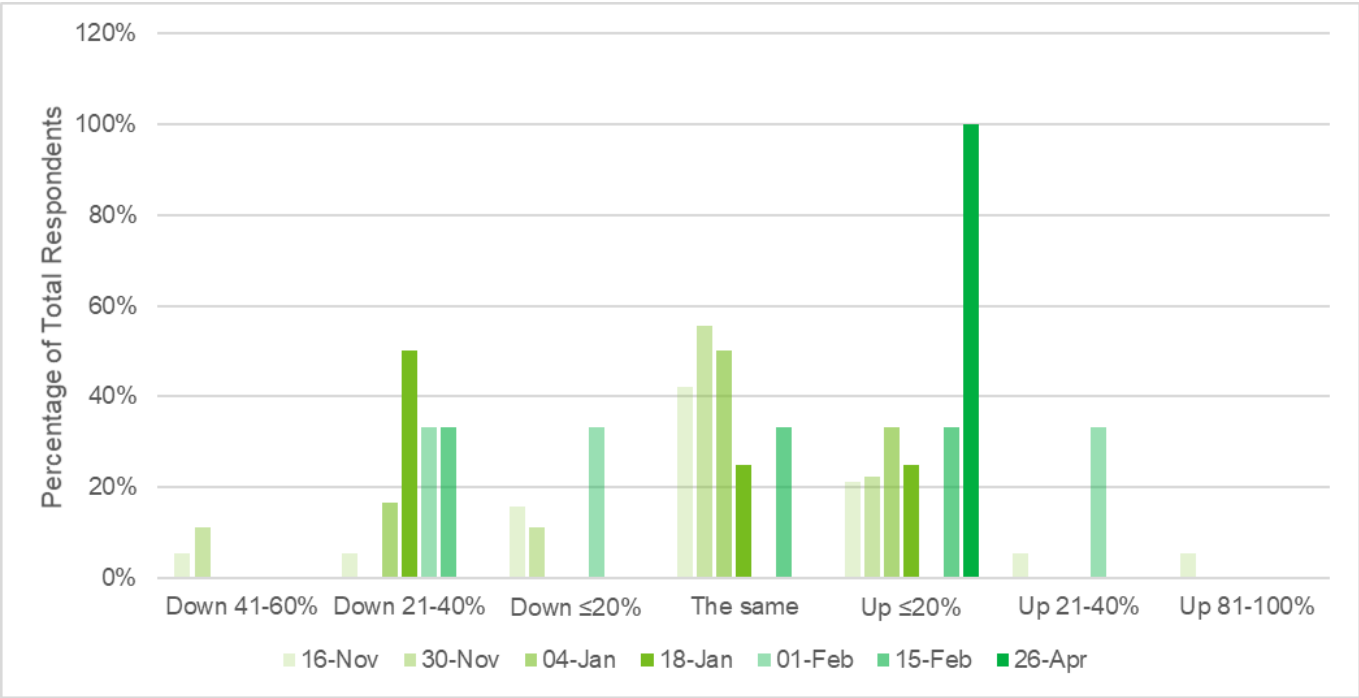


* No responses received for W/C 26 April.

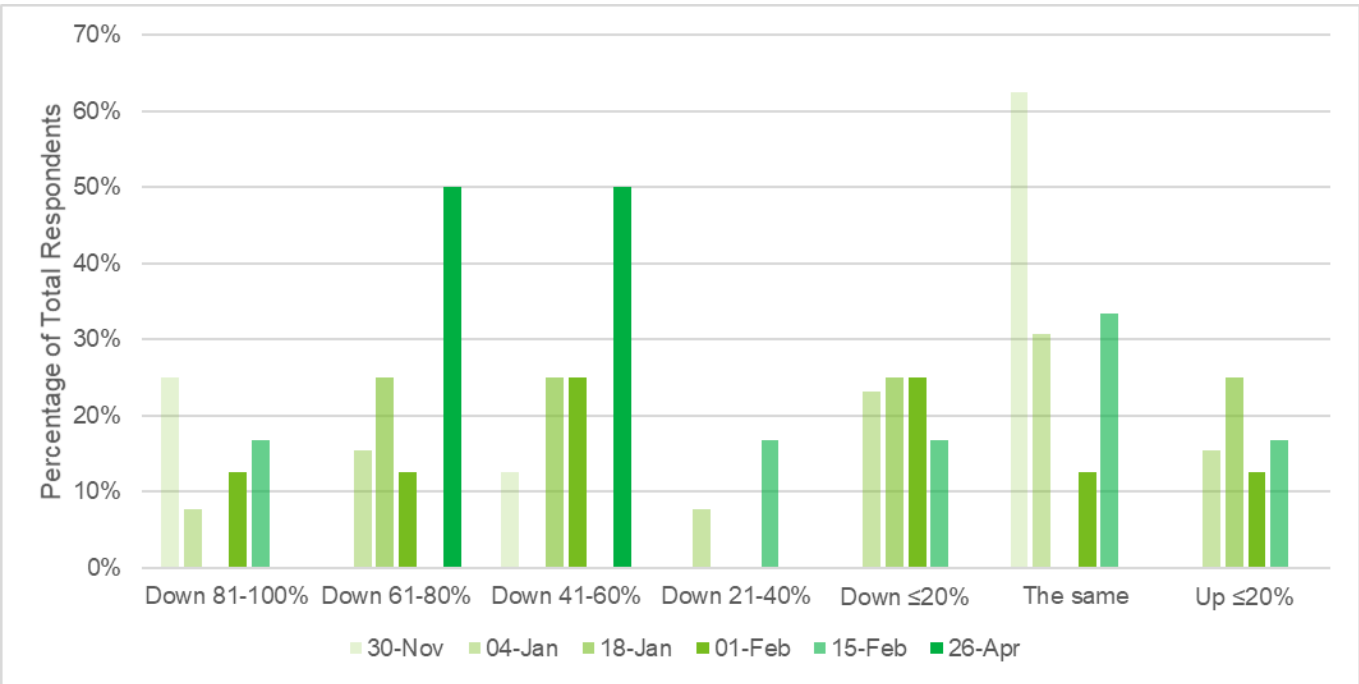
6.10 Compared to this equivalent period in 2019 how much waste are you composting?



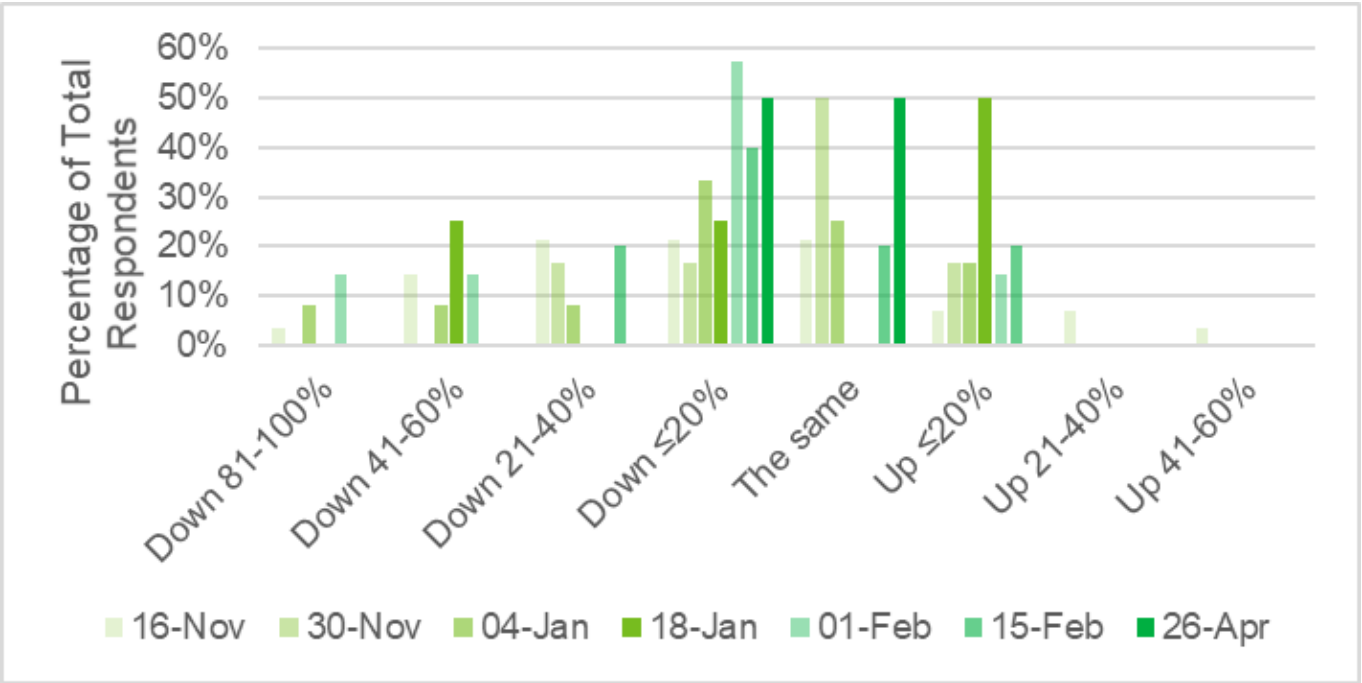
7 Does your business export waste?



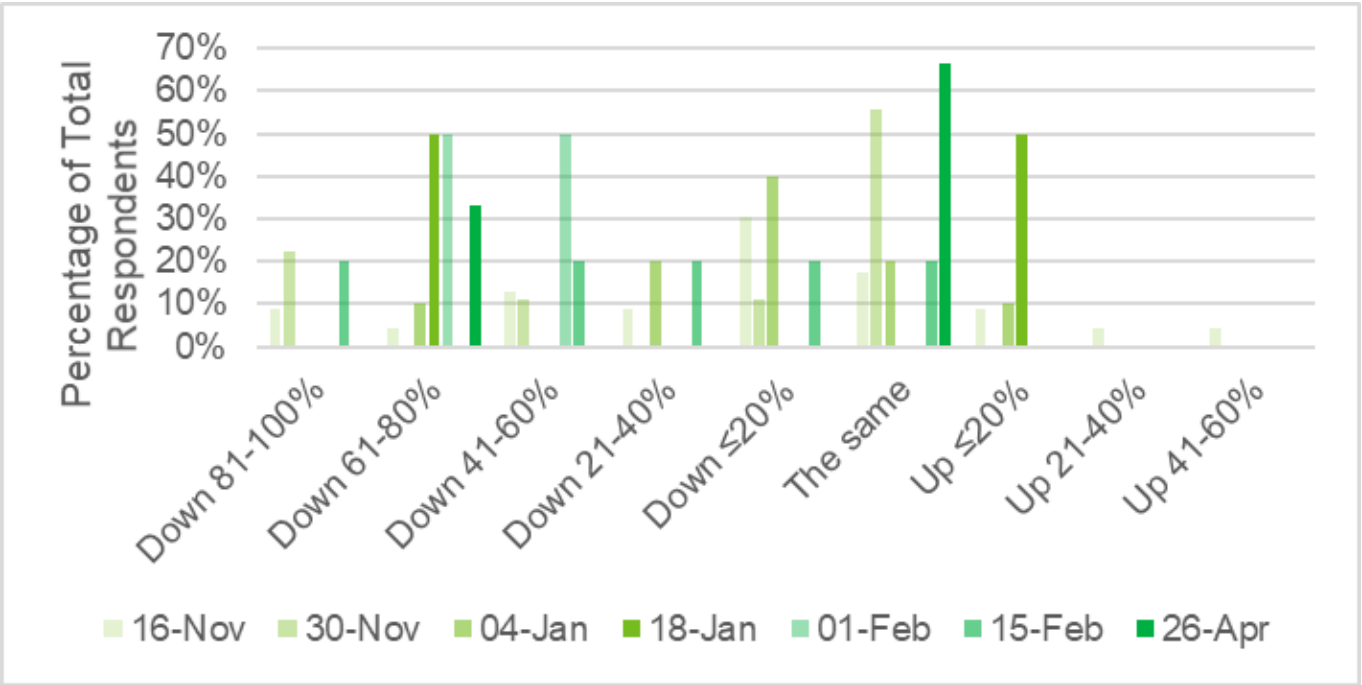
7.1 Compared to this equivalent period in 2019 is the total level of waste you are exporting



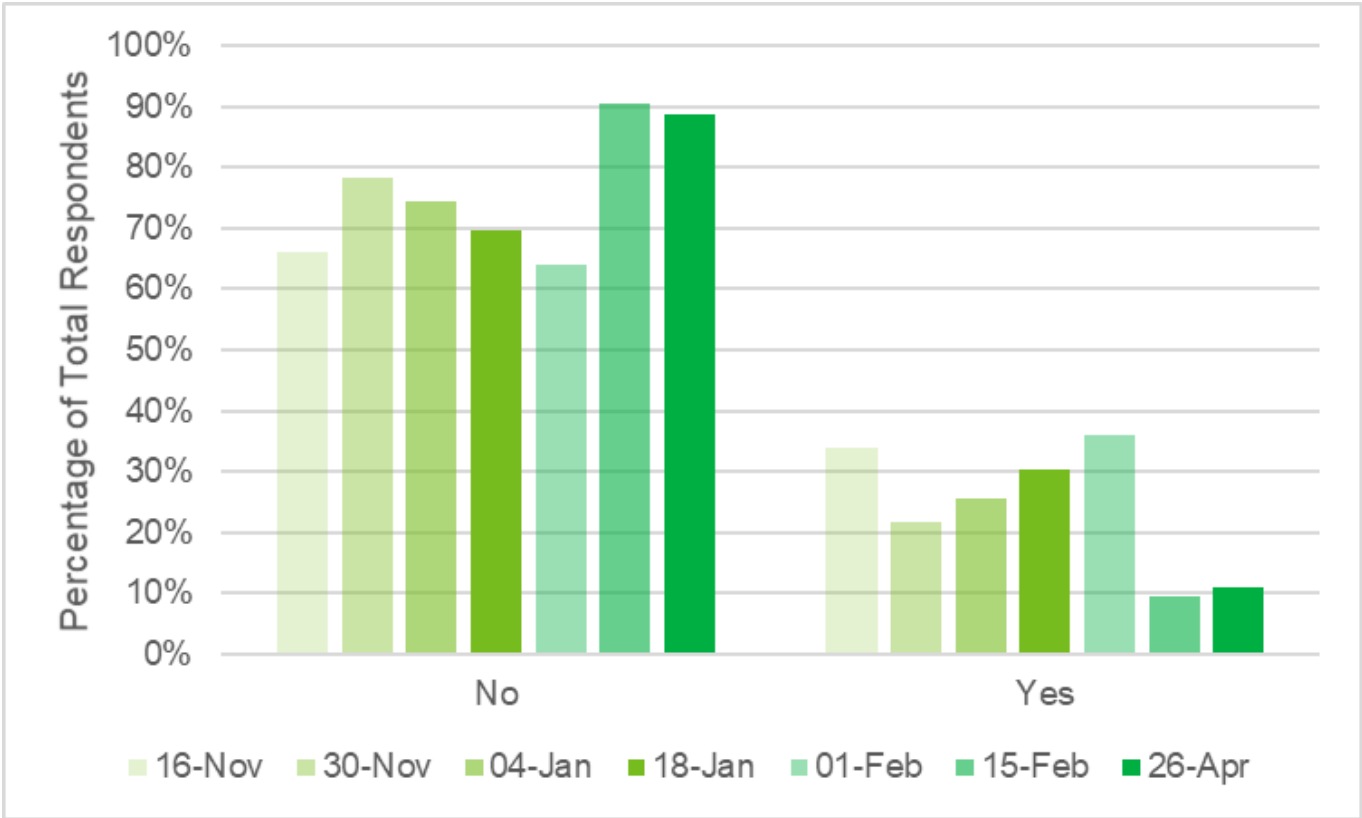
7.2 Compared to this equivalent period in 2019 is the level of waste you are exporting for recycling or reprocessing:



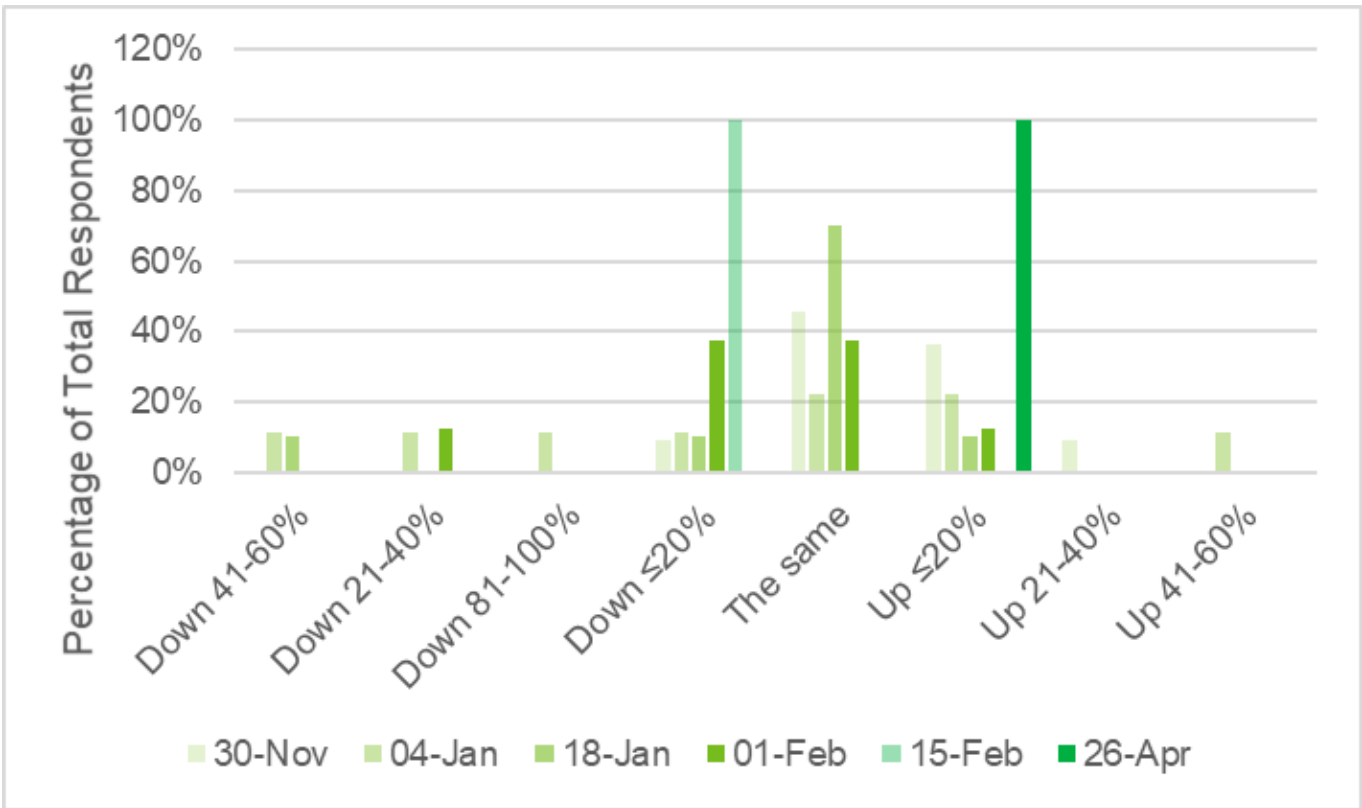
7.3 Compared to this equivalent period in 2019 is the level of waste you are exporting for recovery:



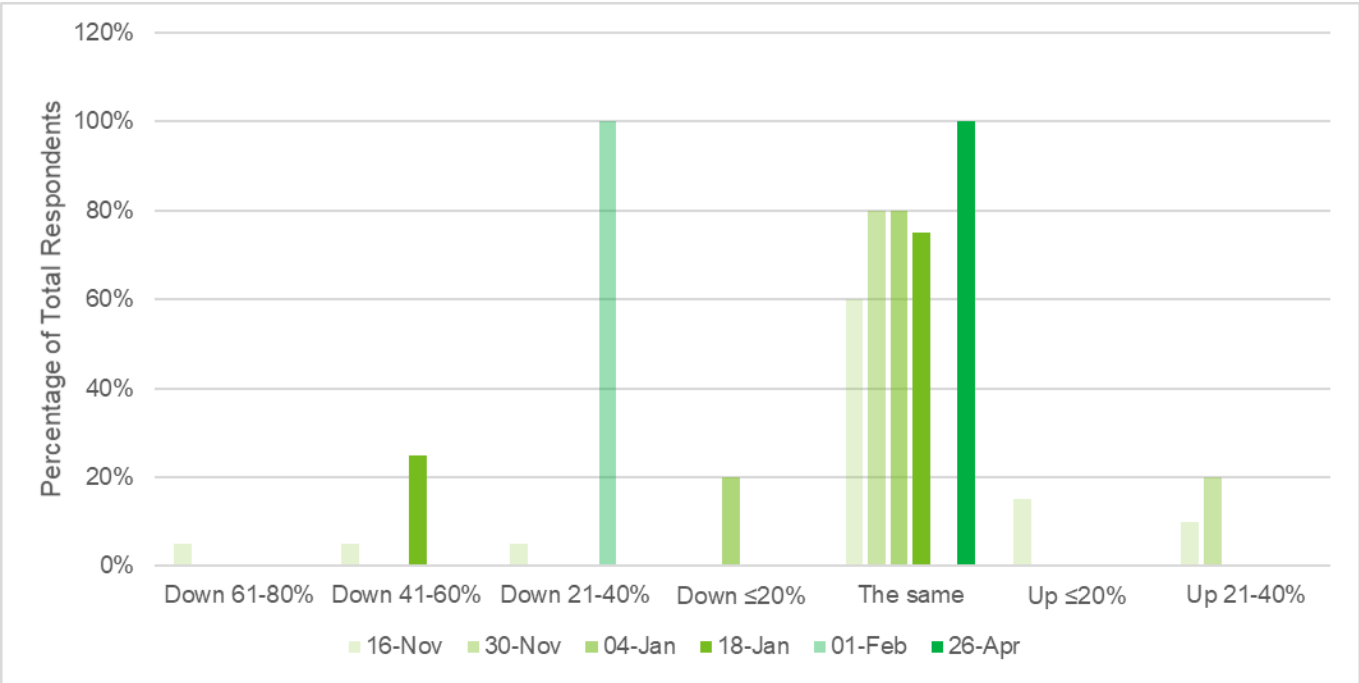
8 Does your business dispose of or recover energy from waste?



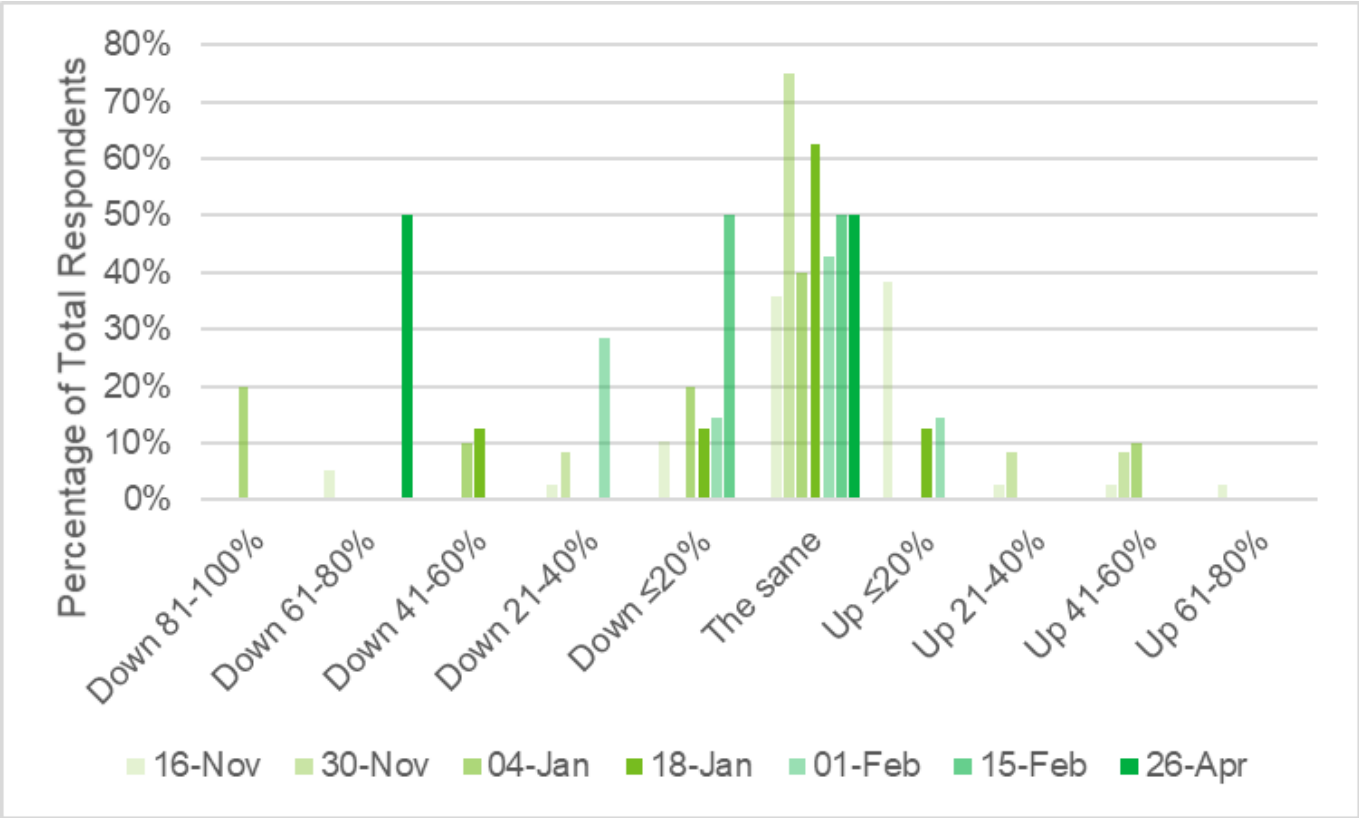
8.1 Compared to this equivalent period in 2019 is the total level of waste you disposing or recovering



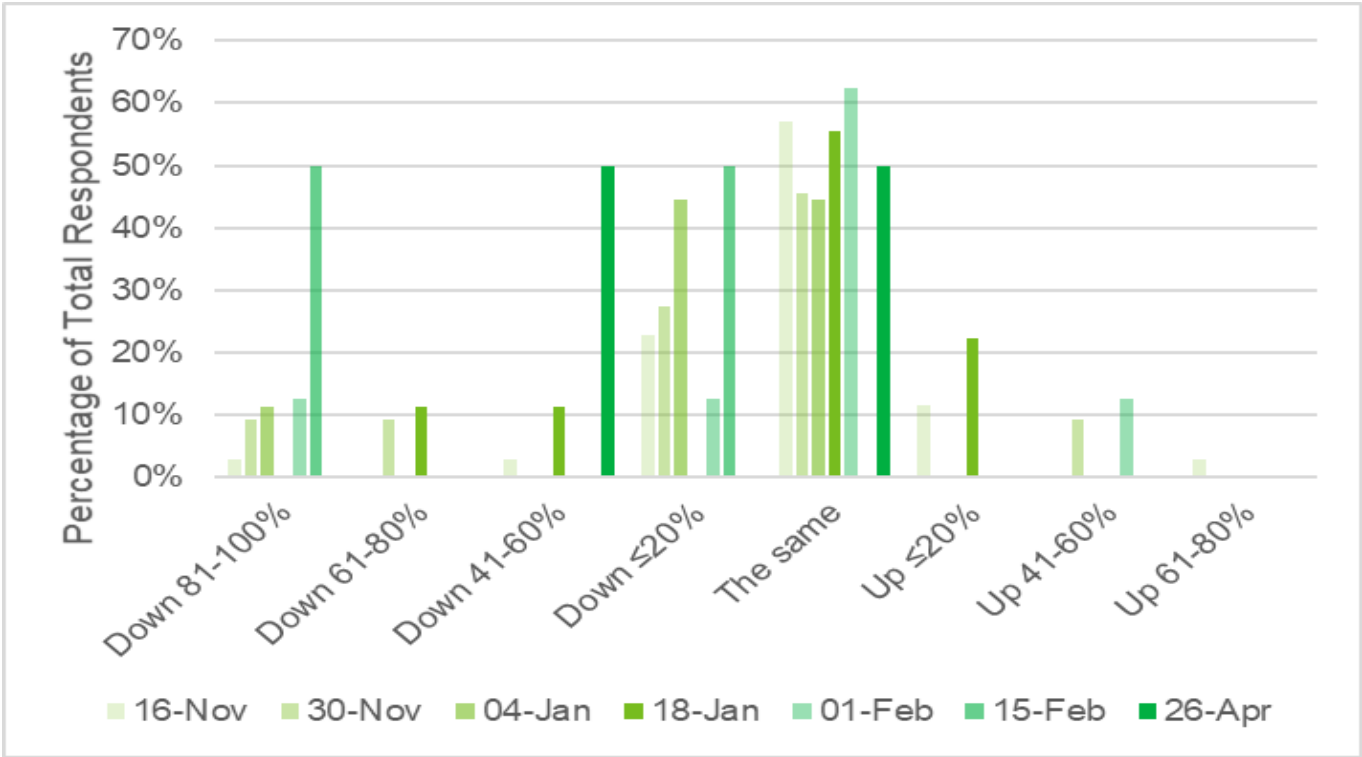
8.2 Compared to this equivalent period in 2019 how much waste are you sending to incineration without recovery for energy?



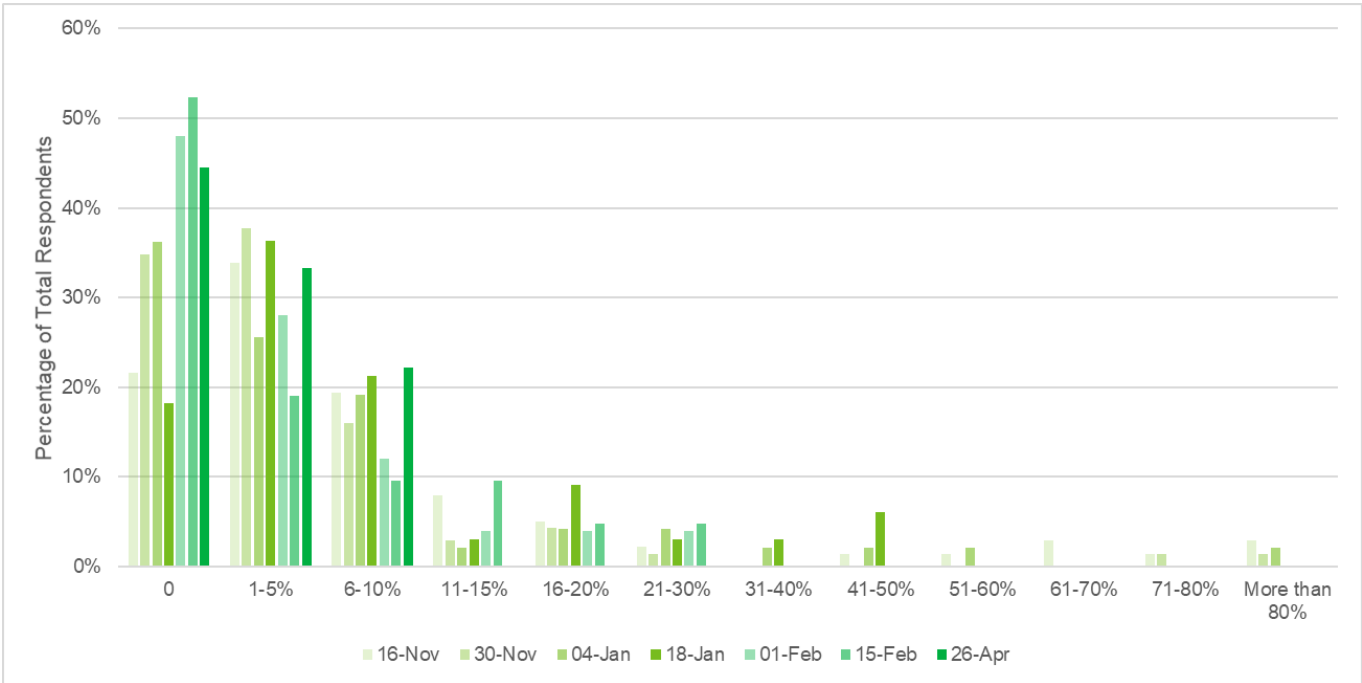
8.3 Compared to this equivalent period in 2019 how much waste are you sending to incineration with recovery for energy?



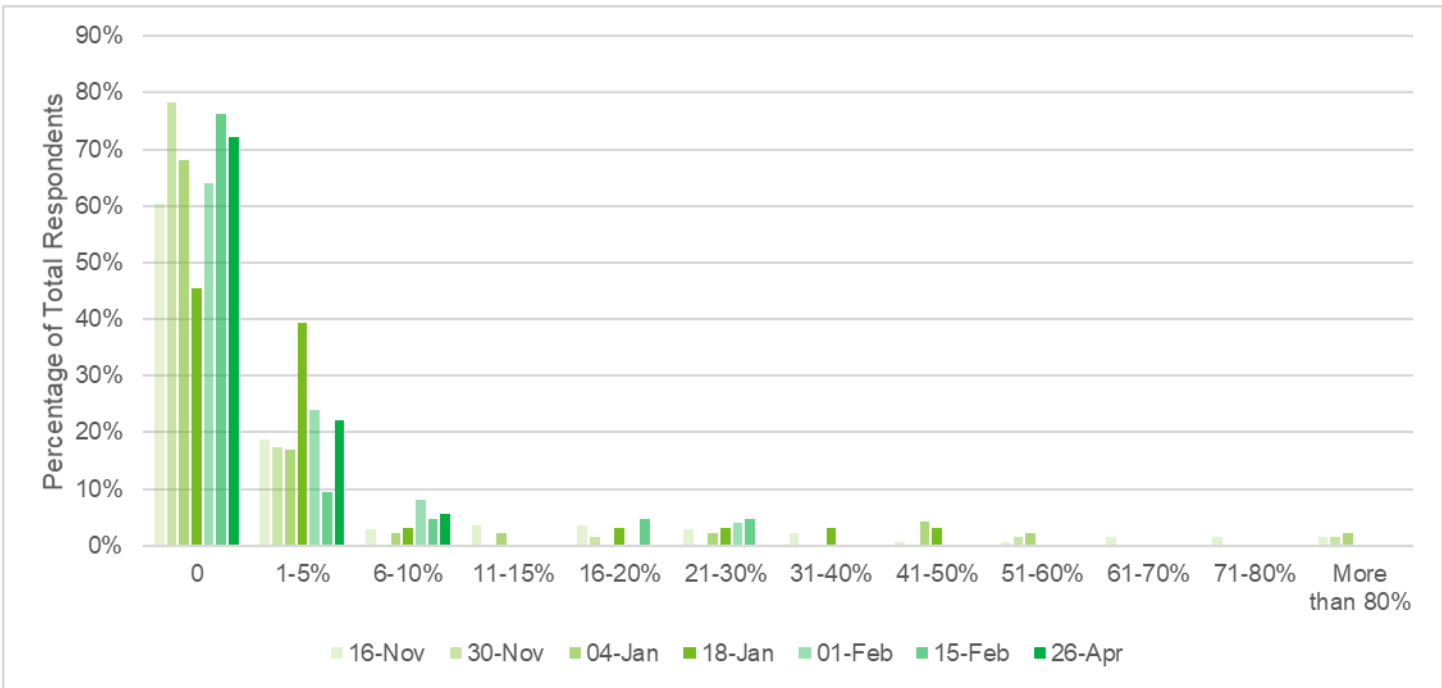
8.4 Compared to this equivalent period in 2019 how much waste are you sending to landfill?



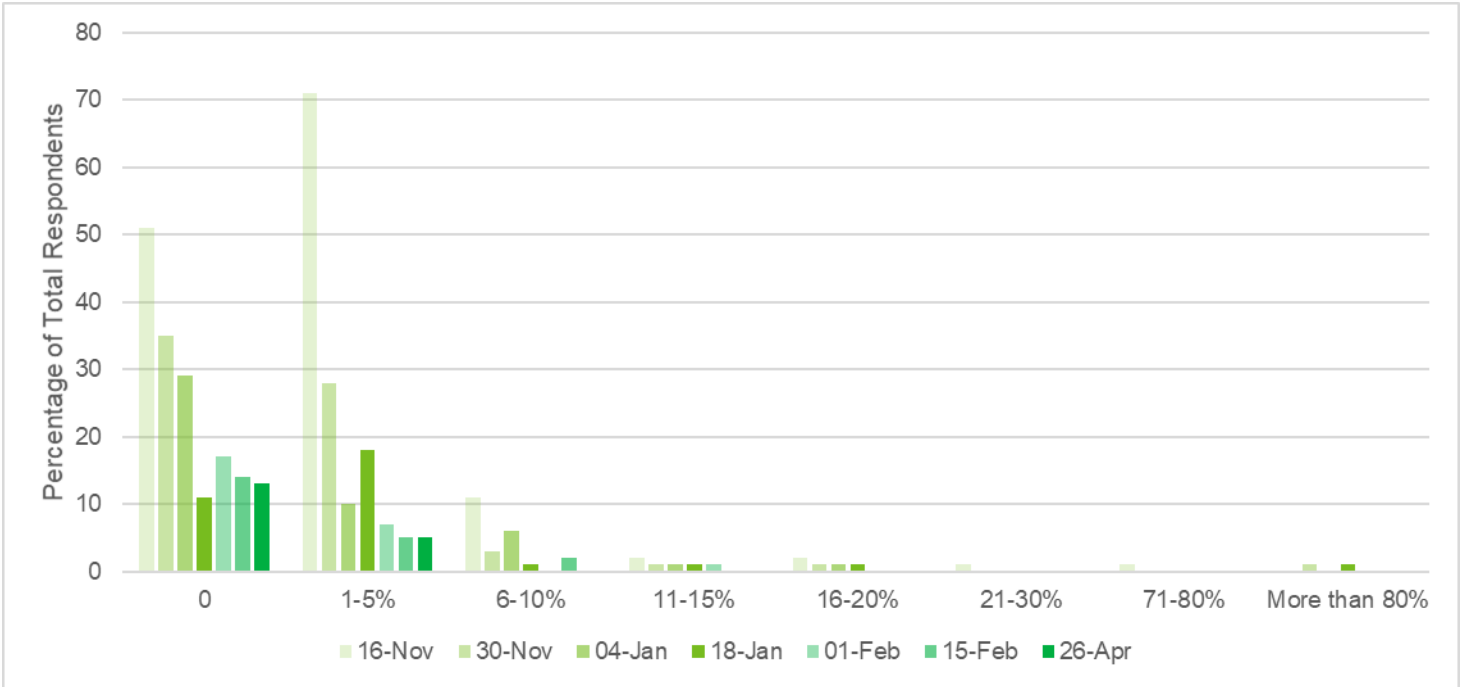
9 What is your current level of total staff absence, including those on furlough, those self-isolating, or those absent for other reasons?



9.1 What proportion of your staff are currently on furlough?



9.2 What proportion of your staff are self-isolating due to confirmed or suspected Covid-19?



10 Are you currently making use of any of the following government support schemes:

